



# MONTHLY MEMBERSHIP PROGRESS REPORT

District 35 N

Results as of: 5/31/2017

GMT: HARVEY WHITLEY

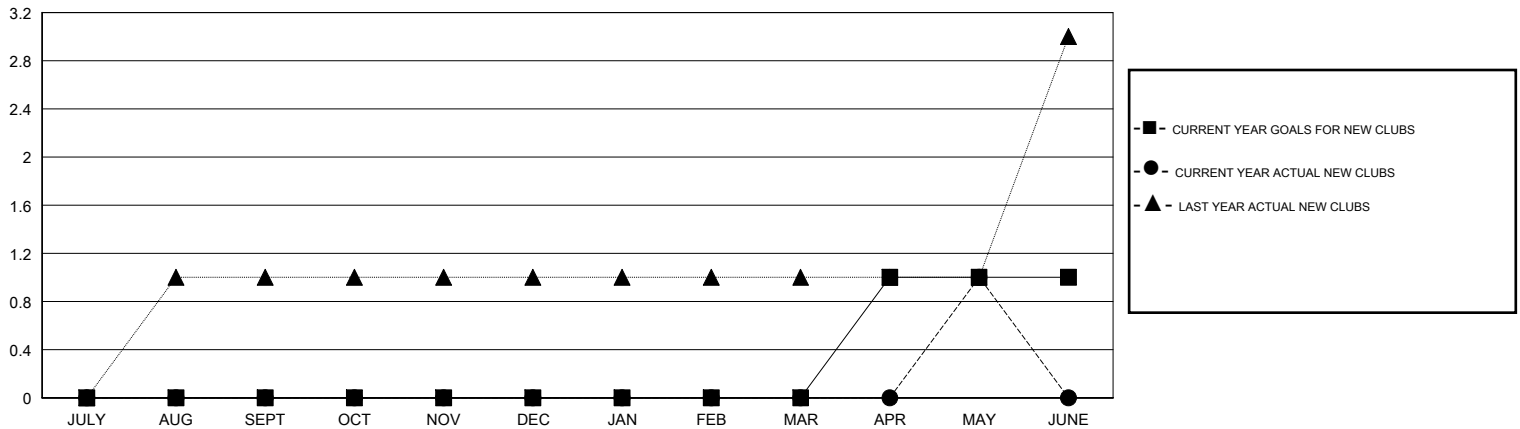
LOCATION FLORIDA

GMT CA

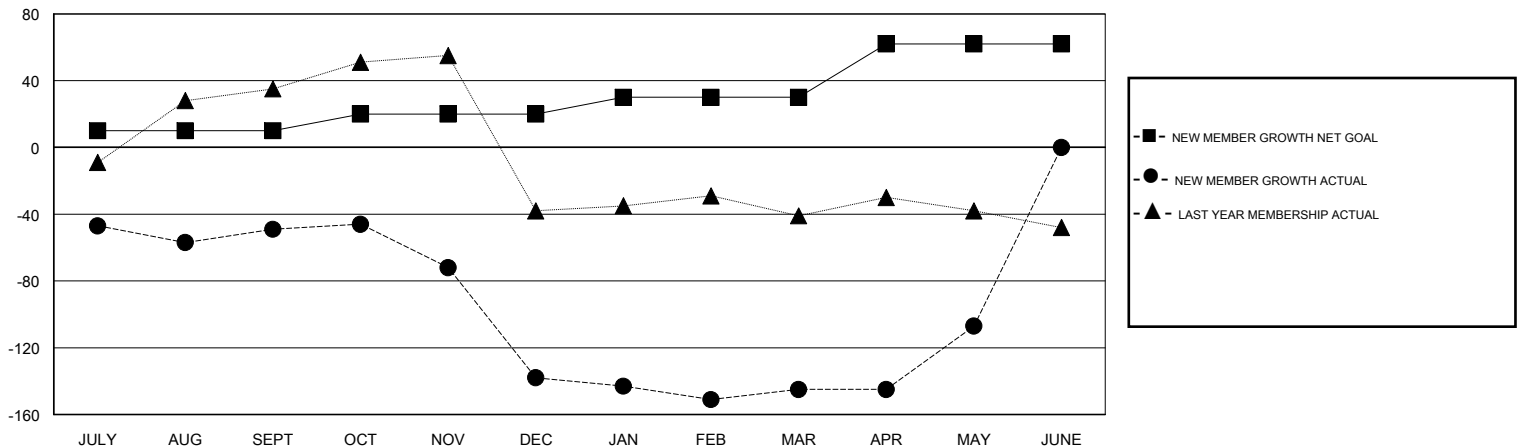
Clubs			
RESULTS FOR 2016-2017			
QUARTER	NEW CLUB GOAL	NEW CLUBS	DROPPED CLUBS
JULY/AUG/SEPT	0	0	3
OCT/NOV/DEC	0	0	4
JAN/FEB/MAR	0	0	0
APR/MAY/JUNE	1	1	0

Members			
RESULTS FOR 2016-2017			
QUARTER	NEW MEMBER GROWTH NET GOAL (not reinstated or transfers)	NEW MEMBER GROWTH ACTUAL (not reinstated or transfers)	DROPPED MEMBERS ACTUAL (including transfers)
JULY/AUG/SEPT	10	58	107
OCT/NOV/DEC	10	19	108
JAN/FEB/MAR	10	34	41
APR/MAY/JUNE	32	61	23

GOALS AND ACTUAL NEW CLUBS CUMULATIVE



GOALS AND ACTUAL MEMBERS CUMULATIVE



DROPPED CLUBS: 7	33 CLUBS OF 60 ADDED 1 OR MORE NEW MEMBERS	<u>GENDER DISTRIBUTION</u>
DROPPED MEMBERS	<a href="#">CLICK HERE FOR CUMULATIVE MEMBERSHIP DATA</a>	MALE 708 (51.49%)
DECEASED 12		FEMALE 667 (48.51%)
CLUB CANCELLED 37		TOTAL FAMILY UNIT MEMBERS 273
OTHER 230		FAMILY MEMBERS PAYING HALF DUES 144
TOTAL 279		